

Welcome

TO YOUR HOME
AWAY FROM
HOME



Thank you for choosing to stay with us—we're thrilled to have you as our guests. We hope you enjoy your time at The Luxe Retreat, your home away from home in beautiful Miami, FL.

To help you make the most of your stay, we've put together a welcome book filled with everything you need to know about the house, along with some of our favorite local spots and hidden gems to explore in Miami.

If you have any questions or need assistance at any time, please don't hesitate to reach out by phone or text at [502-500-4124](tel:502-500-4124). We're here to ensure your stay is as comfortable and enjoyable as possible.

Welcome and enjoy your stay at The Luxe Retreat!

Romi & Dolly



Hello

WE'RE ROMI AND DOLLY

We're so happy to welcome you to The Luxe Retreat. Our family, including our five beautiful children, loves creating memorable experiences for our guests. What started as a vacation spot for us has blossomed into a passion for sharing the beauty and vibrancy of Miami with others. We've put a lot of love into this home, and we hope it brings you as much joy as it brings us.

We're here to ensure your stay is perfect, so don't hesitate to let us know if there's anything you need!

MEET
YOUR
HOSTS

Table of CONTENTS

- 01 WIFI INFORMATION
- 02 CHECK-IN DETAILS
- 03 HOUSE RULES
- 04 ELECTRONICS
- 05 HOME GUIDE
- 06 CASUAL FOOD
- 07 LOCATION RECOMMENDATION
- 08 THINGS TO DO
- 09 LOCAL DAY TRIP
- 10 ACTIVITIES WITH KIDS
- 11 GETTING AROUND
- 12 FREQUENTLY ASKED QUESTIONS
- 13 EMERGENCY INFO



01

CONNECT TO WIFI



WIFI NAME

Torres-Family

PASSWORD

5025004124



Crafting Memories, One Stay at
a Time with Love and Warmth.

CHECK-IN

Check-in is from 3pm | Check out is at 10am

02

DIRECTIONS, PARKING, & SECURITY

Parking:

When you arrive, please park in the driveway. We kindly ask that you avoid parking on the grass to maintain the beauty of our landscaping. The driveway is spacious and conveniently located close to the entrance for easy access to the house.

Check-In:

Your check-in time is anytime after 3 PM. If you anticipate arriving earlier, please don't hesitate to reach out to us—we'll do our best to accommodate an earlier check-in if possible.

Security:

For your peace of mind, we have 24-hour exterior security cameras around the property. Please note that while these cameras help ensure your safety, no cameras are facing the pool directly, allowing you to enjoy your privacy during your stay.



HOUSE RULES

03

These are following house rules you ask that you abide in our short-term rental premises.



Please read carefully. Violation of any rule will result in guests being asked to leave without a refund and may incur additional fines.

1. No Parties, Events, or Gatherings Without Prior Consent:

- No parties of any kind are allowed. A gathering is considered a party if there are more people on the property than the house/unit can sleep.
- Any and ALL visitors must have prior approval before coming onto the property.
- Events are allowed only with written consent from the owner. A non-refundable event fee of \$500 applies, plus an additional \$350 cleaning fee. Unauthorized events will result in immediate eviction and additional fines.

2. Check-In and Check-Out:

- Check-in is at 3 PM, and the primary guest must be present.
- Check-out is at 10 AM.
- Early check-ins and late check-outs are available, but you may incur additional costs based on availability. Please check with your host.

Check-in: After 3 PM
Early Check-in: \$50

Check-out: Before 10 AM
Late Check-out: \$100 per hour past 10 AM



HOUSE RULES

03

These are following house rules you ask that you abide in our short-term rental premises.



3. Swimming Pool Use:

- Use the swimming pool at your own risk.
- Removal of the pool fence is at your own risk. Please ensure to put the fence back upon leaving the property.
- We are not responsible for any accidents that may occur. Supervise children at all times.
- No glass is allowed near the pool area.
- DO NOT TOUCH POOL EQUIPMENT.

4. Parking:

- Do not park in front of neighboring homes.
- Do not park on the grass—violations will incur a \$50 fee per incident.

5. Smoking/Vaping:

- Smoking or vaping inside the house is strictly prohibited. Violations will result in a \$350 fee.

6. Towels and Linens:

- Each missing towel will incur a \$50 charge.
- We do inventory after each stay, and any missing items or heavily soiled or damaged linens/towels will be charged accordingly.

7. Cleanliness:

- Guests are expected to maintain a reasonable level of cleanliness. Clogged toilets, excessive dirtiness, or damage caused by negligence will result in additional charges.

8. Trash Disposal:

Please dispose of all trash properly in the designated bins. Trash pick-up is on Mondays and Thursdays. Ensure bins are placed outside if your stay includes Friday, Saturday, Sunday, or Wednesday.

HOUSE RULES

03

These are following house rules you ask that you abide in our short-term rental premises.



9. Pets:

- Pets are not allowed. Service animals are allowed with prior approval. A non-refundable fee of \$350.00 applies per service animal. Any damage caused by pets will result in additional charges.

10. Noise:

- Please respect our neighbors by keeping noise to a minimum, especially during nighttime hours.

11. Property Inventory:

- We conduct an inventory check after each stay. Any missing items or damages will be charged accordingly.

12. Responsibility for Damages:

- Guests are responsible for any damages caused during their stay. Charges will be applied for any damage or excessive wear and tear.



FORGOT SOMETHING?

03



We've got you covered! In case you've forgotten any essentials, we've provided complimentary goodies just for you. In the primary bathroom drawer, extra toothbrushes, toothpaste, shampoo, conditioner, and more.

We hope this helps make your stay even more comfortable and stress-free. If there's anything else you need, don't hesitate to reach out. Enjoy your stay at The Luxe Retreat!





DISNEY PLUS | NETFLIX

Click on the Home button on the remote to access the app. You can use our guest profile on Disney Plus/Netflix to watch movies and TV shows. Disney Plus/Netflix is already logged in.

WINDOW BLINDS

All of the windows in The Luxe Retreat are equipped with automated blinds for your convenience. Each room has its own set of blinds, and the controllers are located on the wall corresponding to the room they are in. Locate the controller on the wall near the windows in each room. Press the up or down arrow to raise or lower the blinds.

COFFEE MAKER

Nespresso Coffee Maker
Electronic Espresso maker
Keurig K-Slim Single-Serve Coffee Maker



EXERCISE MACHINES

The Luxe Retreat features a **NordicTrack Rower**, **NordicTrack Bike**, and **NordicTrack Treadmill** to help you stay active during your stay.

The machines are currently logged out, so you'll need to log in to your own iFit account to access personalized workouts.

To Use the Machines:

- Turn on the machine by pressing the power button or starting the equipment.
- Log in to your iFit account on the machine's screen to access your workouts. If you don't have an iFit account, you can sign up directly on the machine or use the free workout options.
- Select your workout and adjust the settings (resistance, incline, etc.) as needed.
- Remember to log out of your account after use to ensure your personal information remains secure.

HOME GUIDE

05



THERMOSTAT

The thermostat is located beside the Cozy Corner wall. It is usually kept at **74 degrees** on Auto function.

Click on the Mode button to change it between Cool/Heat/Auto functions.

BEDROOMS

Each bedroom in The Luxe Retreat has its own unique name.

Each controller is labeled with the name of the room it belongs to, which you can find on the back of the controller.



FOR LONGER STAYS

Trash and recycling pick up is every **Monday and Thursday** morning.

The bins are located on the front/side of the house next to the garage.

CASUAL FOODS

These are the list of our food and beverage recommendations in South Miami that we think you might love to dine or take-out while you enjoy your stay at The Luxe Retreat.



LA PERLA PERUVIAN RESTAURANT

Address: 20335 Old Cutler Rd, Cutler Bay, FL 33189

Phone Number: (305) 235-5585

FLAMA BRAZILIAN STEAKHOUSE

Address: 9833 SW 184th St, Palmetto Bay, FL 33157

Phone Number: (786) 732-4045

LATIN HOUSE GRILL

Address: 8695 SW 124th Ave, Miami, FL 33183

Phone Number: (786) 558-9539

BAR & GRILL

Here are the nearest bars and grills in the area.

Sports Grill South Miami

1559 Sunset Dr, Miami, FL 33143

(305) 668-0396

Sandbar Sports Grill

20305 Old Cutler Rd, Cutler Bay, FL 33189

(305) 251-3737

Hole in the Wall Pub

14421 S Dixie Hwy, Palmetto Bay, FL 33176

(305) 234-0222

LOCATION RECOMMENDATIONS

07

BEST RESTAURANTS



- **Chef Adrienne's Vineyard Restaurant and Bar**
 - Distance: Approximately 15-20 minutes by car.
 - Cuisine: American, New American
 - Description: Known for its “Maximum Flavor” approach, this restaurant offers an intimate dining experience with a menu featuring gourmet dishes and an extensive wine list. Chef Adrienne’s is famous for its bold flavors and creative presentations.

- **Finka Table & Tap**

- Distance: Approximately 20-25 minutes by car.
- Cuisine: Fusion, Latin, Cuban, Peruvian, Korean
- Description: This trendy spot offers a unique fusion of Cuban, Peruvian, and Korean cuisine. The restaurant is known for its innovative cocktails and creative dishes, blending traditional flavors with modern twists.

- **The Red Fish by Chef Adrienne**

- Distance: Approximately 20-25 minutes by car.
- Cuisine: Seafood, American
- Description: Located in Matheson Hammock Park, this upscale seafood restaurant offers stunning waterfront views and a romantic ambiance. The menu features fresh, locally-sourced seafood with a creative touch.

LOCATION RECOMMENDATIONS

07

BEST BEACHES

- **Matheson Hammock Park Beach**

- Distance: Approximately 20-25 minutes by car.
- Description: A beautiful, quiet beach with a man-made atoll pool, surrounded by palm trees. It's great for families and offers stunning views of Biscayne Bay.

- **Crandon Park Beach**

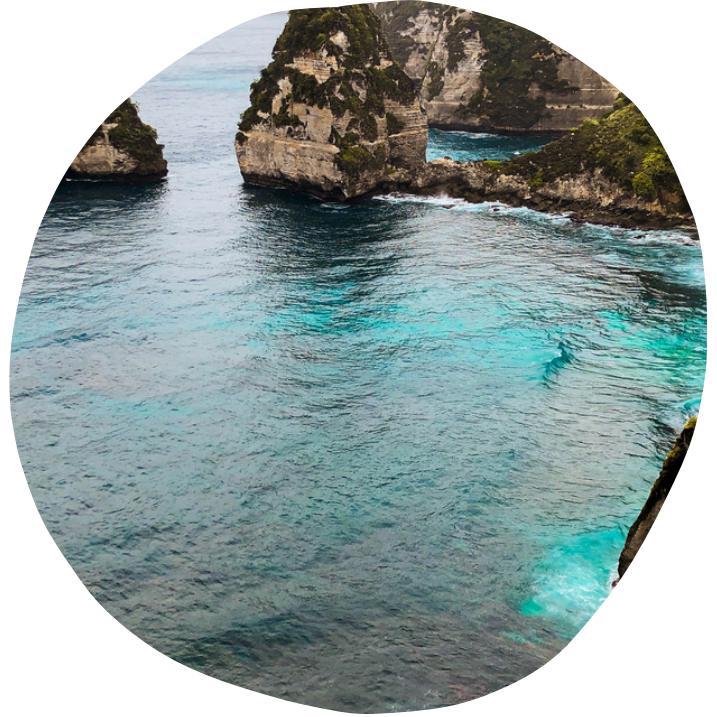
- Distance: Approximately 35-40 minutes by car.
- Description: Located on Key Biscayne, this beach is known for its clear waters, soft sand, and family-friendly amenities. There's also a nature center and walking trails nearby.

- **Bill Baggs Cape Florida State Park**

- Distance: Approximately 40-45 minutes by car.
- Description: Situated at the southern tip of Key Biscayne, this beach is home to the historic Cape Florida Lighthouse. It offers a serene atmosphere, with opportunities for fishing, biking, and picnicking.

- **South Beach (Miami Beach)**

- Distance: Approximately 45-50 minutes by car.
- Description: One of the most famous beaches in the world, South Beach offers a vibrant atmosphere with iconic Art Deco architecture, fine dining, and a lively nightlife scene.



THINGS TO DO

Walk around the area and explore different places and try activities for adrenaline junkies.

FAIRCHILD TROPICAL BOTANIC GARDEN

- Distance: Approximately 30 minutes by car
- Description: A beautiful garden offering serene walking paths, tropical plants, and scenic views. It's a perfect spot for a romantic stroll or a peaceful afternoon surrounded by nature.

DEERING ESTATE

- Distance: Approximately 20 minutes by car
- Description: A historic estate with stunning waterfront views, nature trails, and art exhibits. Couples can enjoy a romantic picnic, explore the estate, or take a guided tour.

SCHNEBLY REDLAND'S WINERY & BREWERY

- Distance: Approximately 15 minutes by car
- Description: A local winery and brewery offering tastings of unique tropical fruit wines and craft beers. It's a great spot for a relaxing afternoon or evening, enjoying drinks and live music.



MORE THINGS TO DO

Walk around the area and explore different places and try activities for adrenaline junkies.



VIZCAYA MUSEUM AND GARDENS

- Distance: Approximately 35 minutes by car
- Description: A historic villa with European-inspired gardens and breathtaking views of Biscayne Bay. It's a romantic setting for a leisurely walk through the gardens or a quiet moment by the water.

REDLAND MARKET VILLAGE

- Distance: Approximately 15 minutes by car
- Description: A bustling marketplace where couples can explore local crafts, fresh produce, and delicious food. It's a fun and unique place to spend a day together, discovering new things and enjoying local culture.



COCONUT GROVE

- Distance: Approximately 30-35 minutes by car
- Description: Explore this charming, historic neighborhood known for its lush parks, waterfront views, boutique shopping, and a variety of dining options. It's perfect for a romantic stroll or a cozy dinner.

LOCAL DAY TRIP

BIKE TRAILS

Black Creek Trail (2.3 miles)
SW 184 St @ SW 137 Ave to US-1 @ SW 212 St

SW 211 St (2.3 miles)
US-1 to HEFT Ramp

Black Creek Trail (2.4 miles)
SW 112 Ave to SW 107 Ave @ SW 216 St

SW 264 St Sidewalk (2.5 miles)
US-1 to SW 137 Ave

South Dade Trail (2.5 miles)
US-1 (Florida City) to SW 264 St

South Dade Trail (2.6 miles)
SW 264 St to SW 112 Ave

Roberta Hunter Park (2.9 miles)
SW 208 St to SW 192 St

SW 216 St (3.5 miles)
HEFT to Old Cutler Road

SW 208 St (4.4 miles)
SW 92 Ave to SW 87 Ave

SW 288 St Sidewalk (4.5 miles)
US-1 to SW 132 Ave

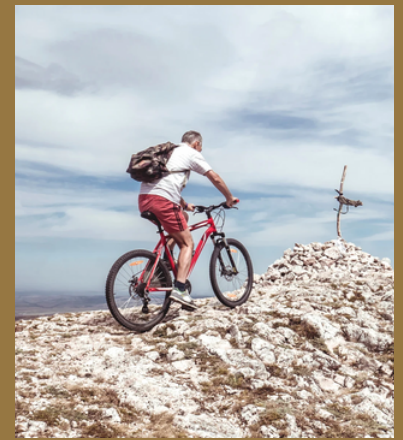
SW 142 Av (4.6 miles)
SW 160 St. to SW 168 St

Black Point Pk (4.9 miles)
Biscayne Bay to SW 87 Ave

Biscayne Trail/SW 87 Ave (5 miles)
Black Point Marina to Old Cutler Rd

SW 137 Ave (5 miles)
SW 186 St to SW 152 St

09



LOCAL DAY TRIP

COUNTY PARKS

JOE AND COLLEEN GRIFFIN PARK (0.5 miles)
12821 SW 232ND ST

PLANT (0.6 miles)
22200 SW 137TH AVE

PINE RIDGE BMX PARK (0.8 miles)
13000 SW 216 ST

GOULDS WAYSIDE PARK (1 miles)
SW 227 ST AND US 1

SHARMAN PARK (1.2 miles)
SW 219 ST AND 123 AV

WILLIAM RANDOLPH COMMUNITY PARK (1.4 miles)
SW 228 ST AND 119 AV

SILVER PALMS PARK 7 (1.5 miles)
23800 SW 118TH PL

PINE FOREST PARK (1.5 miles)
12875 SW 208 ST

PRINCETONIAN PARK (1.5 miles)
SW 252 ST AND 127 AV

SILVER PALMS PARK 6 (1.5 miles)
23380 SW 118TH AVE

SILVER PALMS PARK 5 (1.6 miles)
11741 SW 233RD LN

CHARLES BURR PARK (1.9 miles)
20150 SW 127TH AVE

SILVER PALMS PARK 4 (2 miles)
24150 SW 114TH CT

SILVER PALMS PARK 1 (2 miles)
11344 SW 234TH LN

JL (JOE) & ENID W. DEMPS PARK (2 miles)
11350 SW 216th ST



09

LOCAL DAY TRIP

09

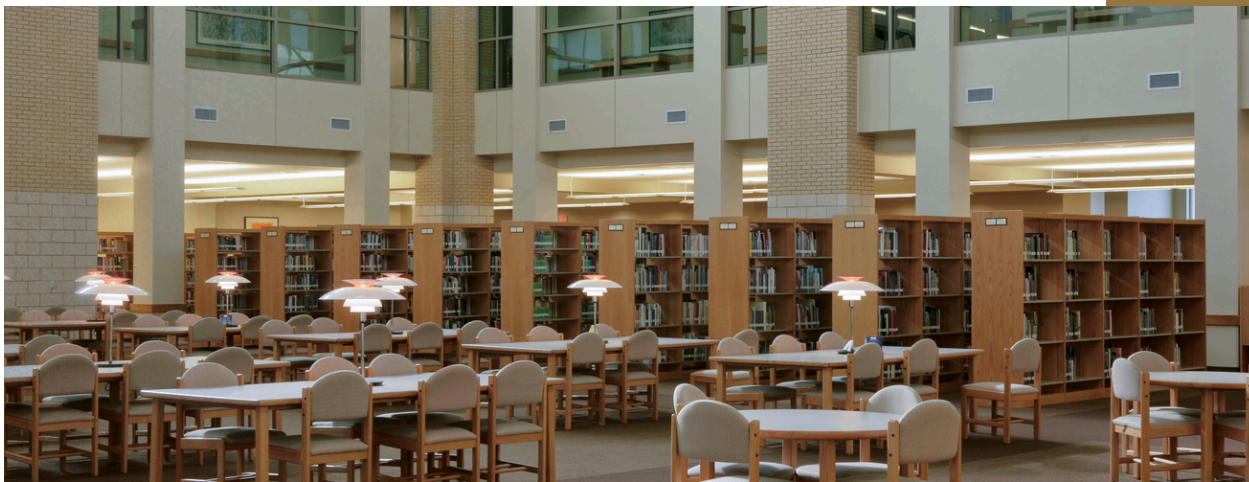


CULTURE VENUES

South Miami-Dade Cultural Arts Center (2.6 miles)
10950 SW 211th ST

Zoo Miami (4.7 miles)
12400 SW 152ND ST

South Dade Senior High Auditorium (4.8 miles)
28401 SW 167th Ave



COUNTY LIBRARIES

South Dade Regional (2.8 miles)
10750 SW 211TH ST

Naranja Branch (3.6 miles)
14850 SW 280th St

Country Walk Branch (4.9 miles)
15433 SW 137th Ave

ACTIVITIES WITH KIDS

Tour the kids around the area and explore different places and go on adventure while you stay at The Luxe Retreat

MIAMI SEAQUARIUM

- Distance: Approximately 40 minutes by car
- Description: A marine-life entertainment park featuring dolphin and sea lion shows, as well as exhibits with sharks, manatees, and more. A great place for kids to learn about marine animals and enjoy interactive experiences.



CORAL CASTLE MUSEUM

- Distance: Approximately 15 minutes by car
- Description: A mysterious and unique attraction featuring giant stone structures, perfect for curious kids and history buffs.

EVERGLADES ALLIGATOR FARM

- Distance: Approximately 25 minutes by car
- Description: A fun and educational experience where kids can see alligators, take an airboat ride, and watch wildlife shows.

ZOO MIAMI

- Distance: Approximately 20 minutes by car
- Description: A large and popular zoo featuring a wide variety of animals, interactive exhibits, and a splash pad for kids.



ACTIVITIES WITH KIDS

Continues

CASTELLOW HAMMOCK PRESERVE & NATURE CENTER

- Distance: Approximately 10 minutes by car
- Description: A peaceful nature preserve where kids can explore trails, observe butterflies, and learn about local wildlife.

MONKEY JUNGLE

- Distance: Approximately 15 minutes by car
- Description: An interactive park where monkeys roam freely and kids can observe them in a natural setting.



MANA WYNWOOD CONVENTION CENTER

- Distance: Approximately 40 minutes by car
- Description: While this venue is more known for hosting events, it's also a great spot to check out family-friendly events, exhibitions, and festivals that often take place here. Always check the schedule for events that might interest the kids.

MIAMI CHILDREN'S MUSEUM

- Distance: Approximately 40 minutes by car
- Description: A museum designed specifically for children, featuring interactive exhibits, play areas, and educational programs. It's a fun and enriching experience for kids of all ages.

GETTING AROUND

11

Here is a quick run-down of the ways to get around town.



METRO

The closest Metrorail station to the house is Dadeland South Station, which is approximately a 15-20-minute drive from the property.

Dadeland South Station is a major hub in the Metrorail system, offering easy access to Downtown Miami.

UBER

Miami has a very robust and well-organized Uber community. Simply download the app and create an account, you can be booking an Uber ride within minutes.

TAXI

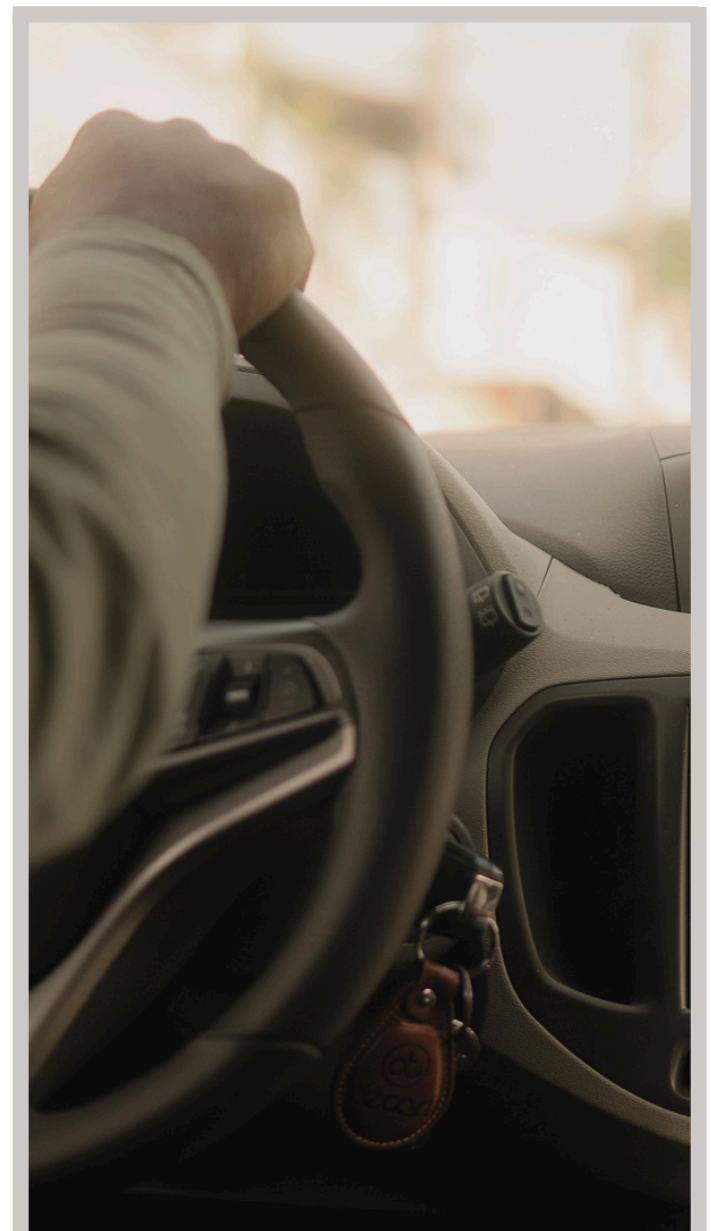
Yellow Taxi Miami | (786) 830-6253

It is also easy to flag down a taxi, if you are heading from or to the airport, make sure you confirm the fare amount first with the driver.

BUS

The closest bus stop is located on US-1 (South Dixie Highway) at SW 232nd Street. This stop is approximately a short walk away from the property.

This bus stop provides routes that connect to various parts of Miami, offering an easy way to explore the city.



FAQ

12

FREQUENTLY ASKED QUESTIONS

1 WHAT IS THE CHECK-IN AND CHECK-OUT TIME?

Check-in is from 3:00 PM, and check-out is by 10:00 AM. Early check-ins and late check-outs may be available upon request, subject to availability and an additional fee.

2 IS PARKING AVAILABLE AT THE LUXE RETREAT?

Yes, we offer a spacious driveway that can accommodate up to 4 vehicles. Please do not park on the grass or in front of neighboring homes.

3 IS THE LUXE RETREAT FAMILY-FRIENDLY?

Absolutely! The Luxe Retreat is designed with families in mind, offering spacious accommodations and family-friendly amenities to ensure everyone has a comfortable and enjoyable stay.

4 WHAT AMENITIES ARE AVAILABLE AT THE PROPERTY?

The Luxe Retreat features 5 bedrooms, a fully equipped kitchen, a private pool, a fully outfitted gym (with a NordicTrack rower, bike, and treadmill), a large backyard, and spacious living areas for relaxation and entertainment.

5 ARE PETS ALLOWED?

Pets are not allowed, with the exception of service dogs, which must be approved in advance. A non-refundable fee of \$350 will apply for service dogs.

6 IS THE LUXE RETREAT A SECURE PROPERTY?

Yes, The Luxe Retreat is a secured home with exterior security cameras for your safety. There are no cameras overlooking the pool area, ensuring your privacy.

7 CAN WE HOST EVENTS AT THE LUXE RETREAT?

Yes, events are welcome with prior approval. There is a flat additional fee of \$500 for events, and the cleaning fee will be doubled to \$700.

8 WHAT IS THE CANCELLATION POLICY?

Cancellations made 30 days or more before arrival will receive an 80% refund. Cancellations made less than 30 days in advance are non-refundable. No refunds are issued for early departures or no-shows.

FAQ

12

FREQUENTLY ASKED QUESTIONS

9 IS THERE A POOL AT THE PROPERTY?

Yes, The Luxe Retreat has a private pool for guest use. Please note that the pool is used at your own risk, and children must be supervised at all times. Glass is not allowed near the pool, and the pool fence should remain in place for safety. The pool is not heated, but due to the warm Miami weather, the water is typically hot for most of the year.

10 HOW SHOULD I HANDLE GARBAGE AND RECYCLING?

Please dispose of general waste in the green bin and recyclables in the blue bin, both located outside. Trash is collected on Mondays and Thursdays. Remember to place the bins outside on these days.

11 HOW FAR IS THE LUXE RETREAT FROM MIAMI INTERNATIONAL AIRPORT?

The Luxe Retreat is approximately 35-45 minutes by car from Miami International Airport (MIA), depending on traffic.

12 ARE THERE ANY AREAS OF THE HOUSE THAT GUESTS CANNOT ACCESS?

Yes, there are two owner's closets that are off-limits to guests—one in the Master Suite bathroom and one in the main hallway.

13 WHAT RESTAURANTS DELIVER TO THE PROPERTY?

Some popular delivery options include Sushi Sake Redlands, Latin House Grill, and Frankie's Pizza. Delivery is available via Uber Eats, DoorDash, or directly through the restaurant.

14 WHAT LOCAL ATTRACTIONS ARE NEAR THE LUXE RETREAT?

Local attractions include Zoo Miami, Deering Estate, Monkey Jungle, Schnebly Redland's Winery & Brewery, and Fairchild Tropical Botanic Garden. We're also close to beautiful beaches and parks.

15 HOW DO I GET TO THE LUXE RETREAT?

The Luxe Retreat is accessible by car, taxi, ride-share services (Uber/Lyft), or public transportation. We recommend renting a car for the easiest access to the property and nearby attractions.

13 EMERGENCY

The following are the list of contacts and addresses in case of Emergency.

JACKSON SOUTH MEDICAL CENTER

approximately 15 minutes away at 9333 SW 152nd St, Miami, FL 33157. This hospital offers a full range of medical services and is well-equipped for emergencies.

FLORIDA POISON INFORMATION CENTER - MIAMI

is available 24/7. You can reach them at 1-800-222-1222 for immediate assistance

COUNTY POLICE STATIONS

South Station (2.8 miles) | 10800 SW 211th St

COUNTY FIRE STATIONS

Princeton Fire 5 (0.6 miles) | 13150 SW 238TH ST



INFORMATION

The Luxe Retreat is owned by Dolly and Romi Torres. It is located in the center district of Miami-Dade County.

We started accommodating friends as guests for short visits and vacations. Now, we have turned our space into an Airbnb for city visitors and travel enthusiasts.

Our aim is to encourage others to explore our great city and enjoy all that it has to offer.



WIFI

Network: Torres-Family
Password: 5025004124



ADDRESS

113277 SW 230th Street
Miami FL 33170



HOUSE RULES

- No smoking in house
- Quiet hours begin at 10pm
- No extra guests



CHECK-OUT

- Check out is at 10am
- Turn out all lights, heat/AC
- Load dishes in dishwasher
- Lock doors on the way out



CONTACT

Host cell:
(502) 500-4124
(305) 440-1507



REVIEWS

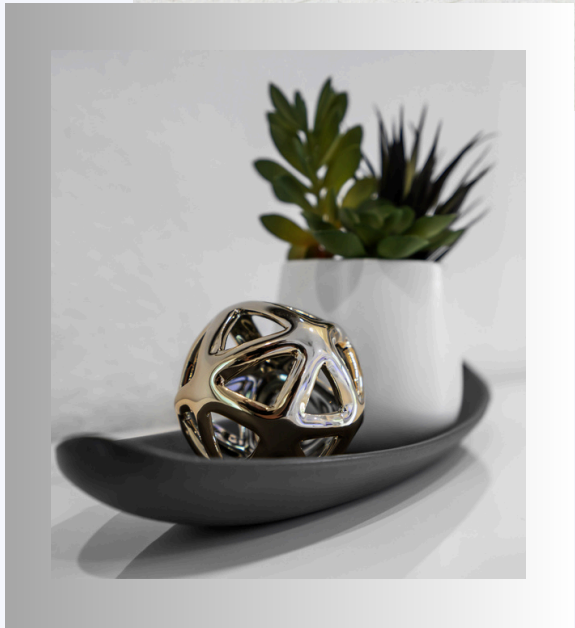
If you enjoyed your time with us, please leave us a review. We'd love to hear from you!

THANK YOU!

FROM THE LUXE RETREAT

We are glad to host you in your short stay at The Luxe Retreat! We hope you will come back soon.





THANK YOU FOR STAYING!

We are glad to host you in your short stay at The Luxe Retreat! We hope you will come back soon.

If you book another trip in the next 6 months with us we will give you a 10% friends discount!



FOLLOW US

@TORRESLUXURYRETREATS





BIRTHDAY TREAT!

Celebrate your birthday with us and receive a 10% discount as a gift from your hosts when you make a reservation!

29

OUR PLACE IS YOUR HOME
AWAY FROM HOME

home

/həʊm/ noun

isn't just the place you live—it's where you find comfort, safety, and connection. It's the physical space that provides shelter and the emotional space that fills your heart with warmth and belonging. A true home is where your story unfolds, surrounded by the people and things that matter most.

